

SECRETS OF THE MASTERS LIBRARY**Introduction:**

Trade Secrets of the Masters is by far the most diverse collection of strategies Genesis has to offer. Based on a variety of successful traders and their most reliable, market tested techniques, this powerful trading tool gives you an opportunity to make the most of their experience, knowledge, and insight. Own the tools that trading masters like Andrea Unger and others use to be “The Masters”!

Benefits:

This library makes no secret of its success. Each rule is fully visible and can be adjusted and manipulated to your specifications. It helps you to gain efficiency using dependable techniques and reliable, organized performance with minimal effort on your part. NO guesswork, NO speculation.

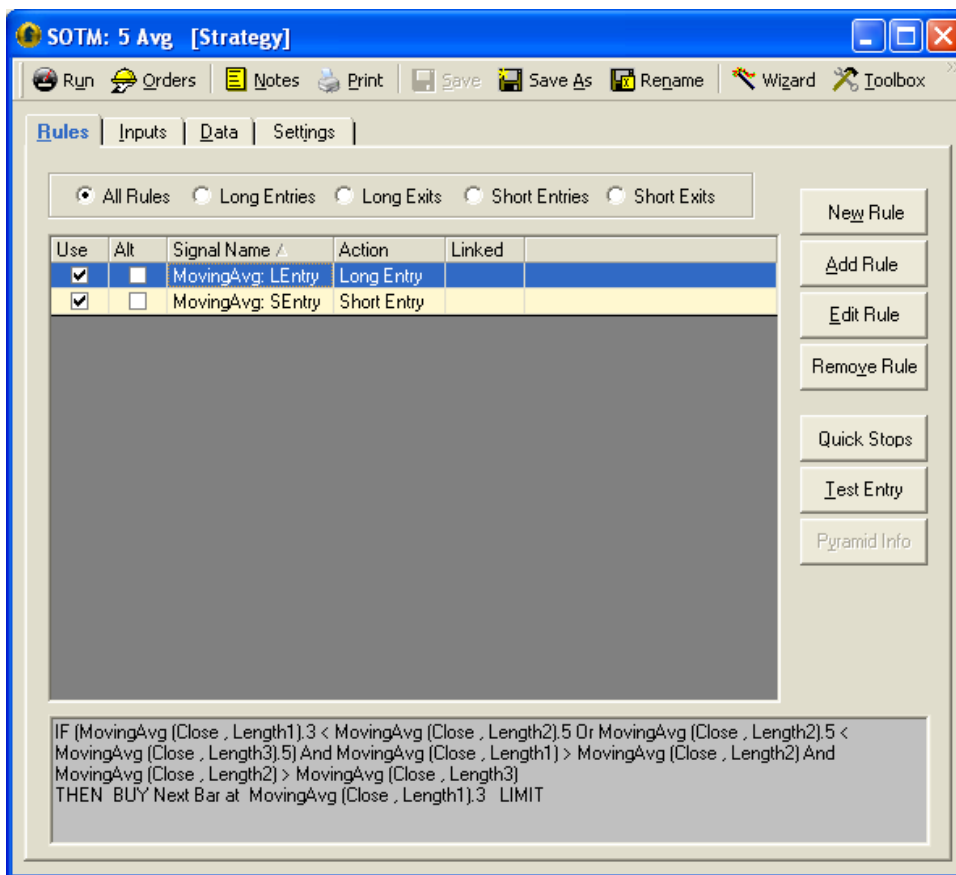
Included in this Library:**Strategies**

- 5 Avg.
- EZ Bonder
- Heating Oil daily
- Japanese Yen
- My Long Term Trend Rider
- Pathfinder Currency
- Pound Trader
- Stuckey JY Trader
- Wagner31

Strategy Details

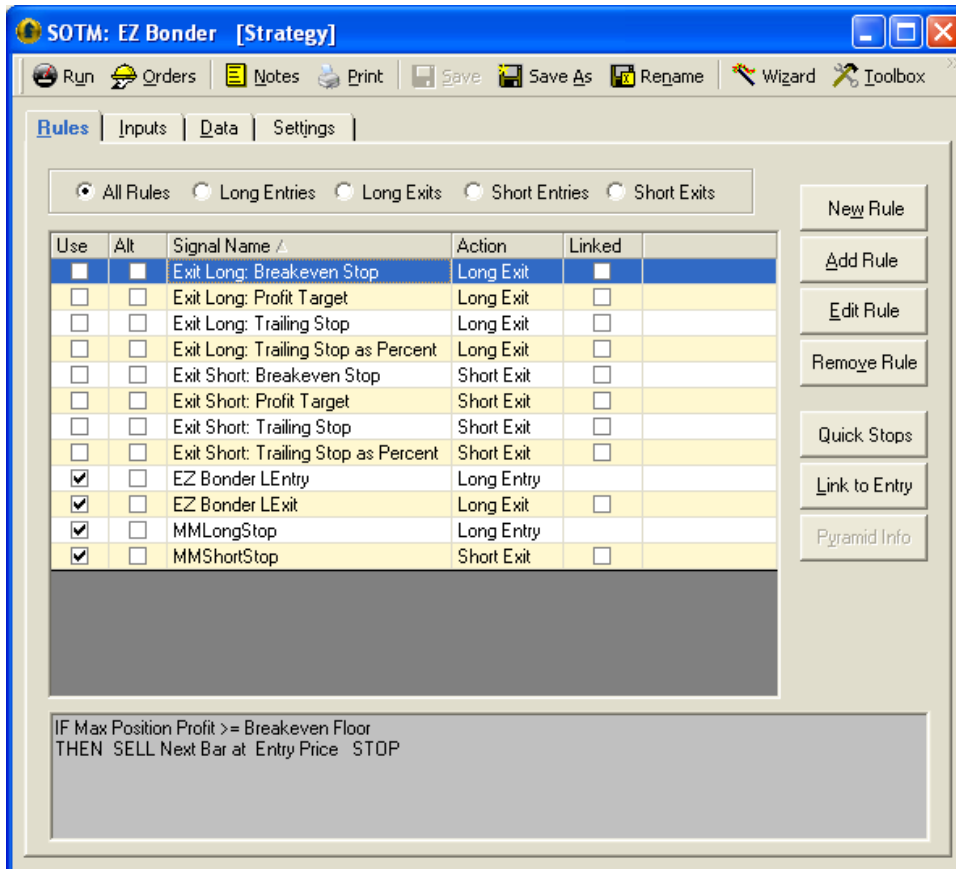
SOTM: 5 Avg

This simple daily reversal strategy was designed to guide the new strategy writer into using some of the more powerful features of the Trade Navigator Platinum version. On examination, you will find that each of the two rules that this strategy uses show how the operators in Trade Sense work, as well as how to use variables into your strategies for optimization.



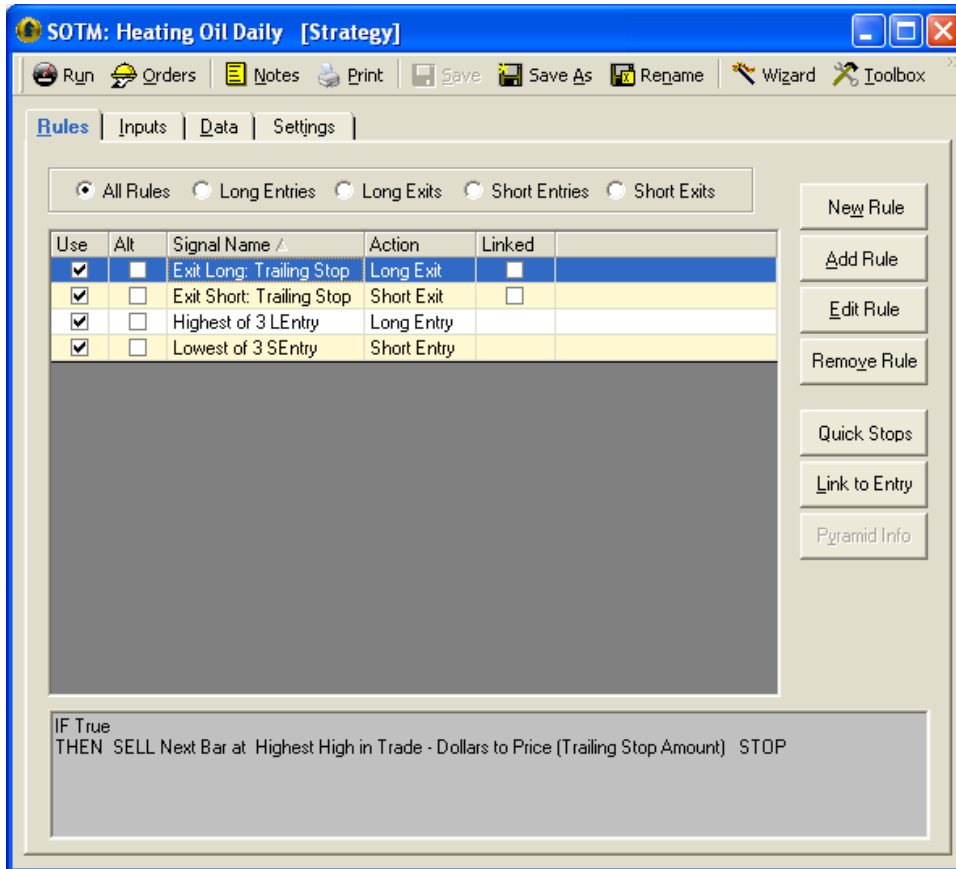
SOTM: EZ Bonder

The EZ Bonder strategy is a complete daily bond trading strategy. This strategy buys on a stop at the current close plus a percent of the current range. The short side of this strategy is simply the reverse. The best parts of this strategy are the exits. It includes both money management type stops and all of the old standards such as trailing stops, breakeven stops, and dollar profit targets.



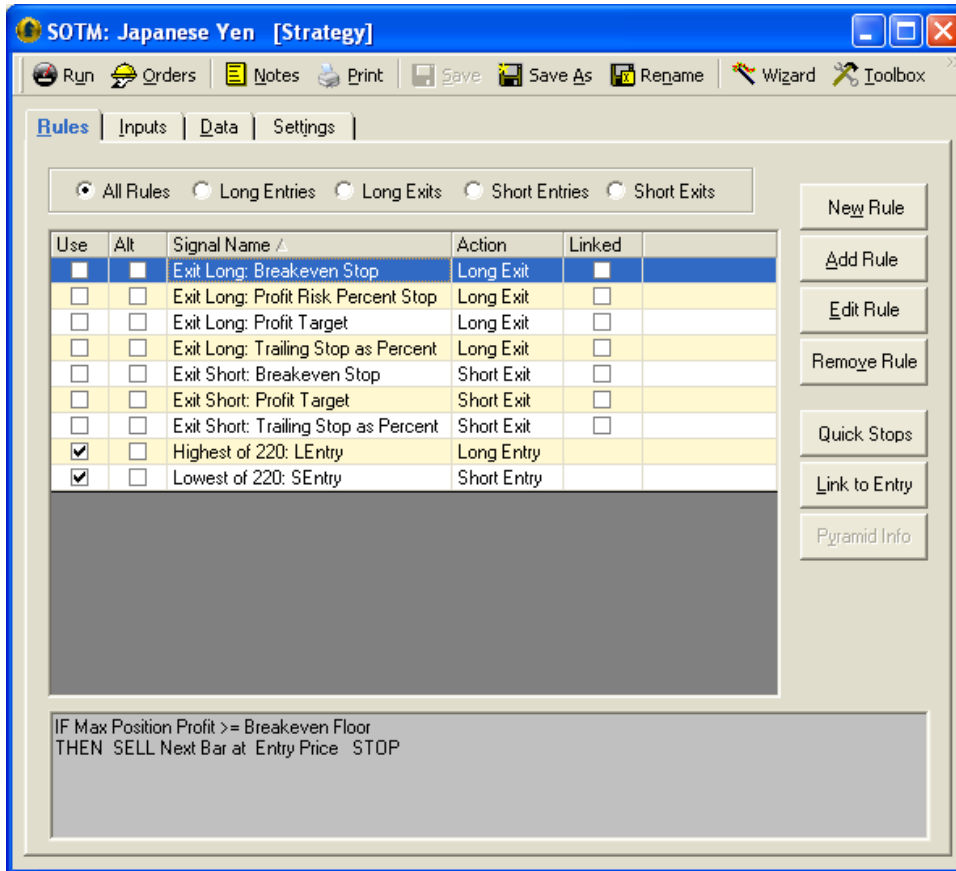
SOTM: Heating Oil Daily

Developed by Stan Ehrlich, this strategy buys at the high of the last 3 bars when the current low is less than the low of 13 bars starting 3 bars ago. The converse generates a sell signal. There is only one type of exit included in this strategy, the trailing stop.



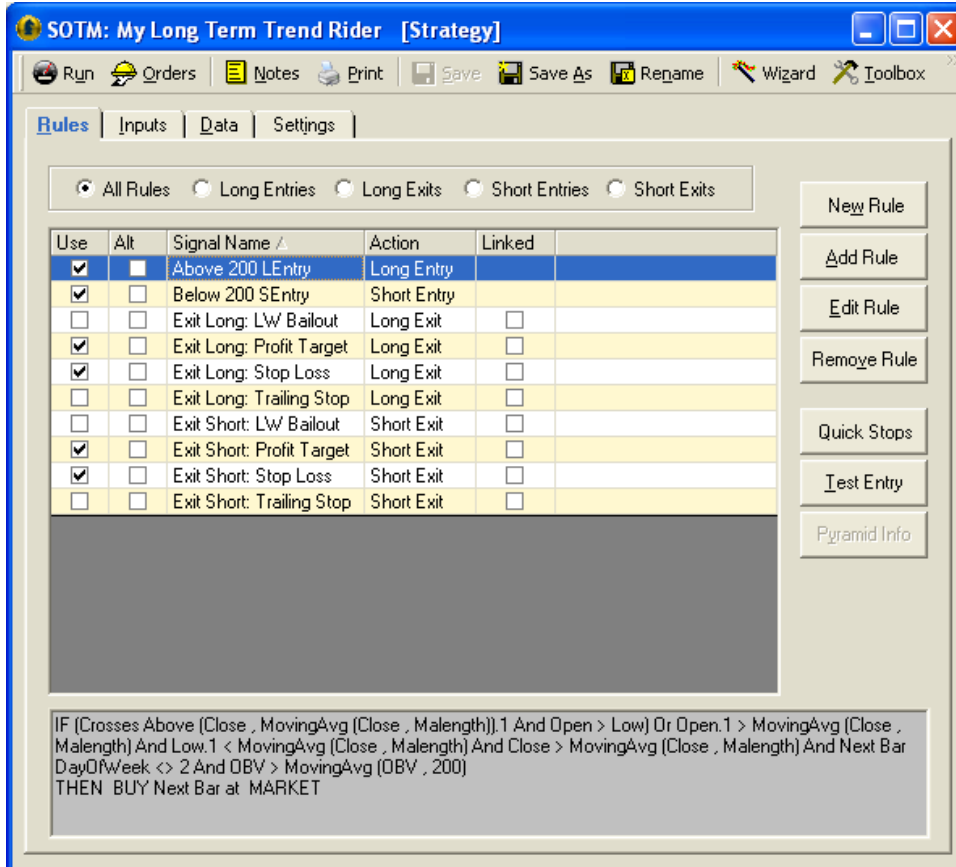
SOTM: Japanese Yen

This David Fox strategy buys when the close is greater than the highest high of a set number of bars. We have included many different exits in this strategy for added versatility. They include the breakeven stop, profit/risk percentage stop, dollar profit target, and trailing stop as a percentage.



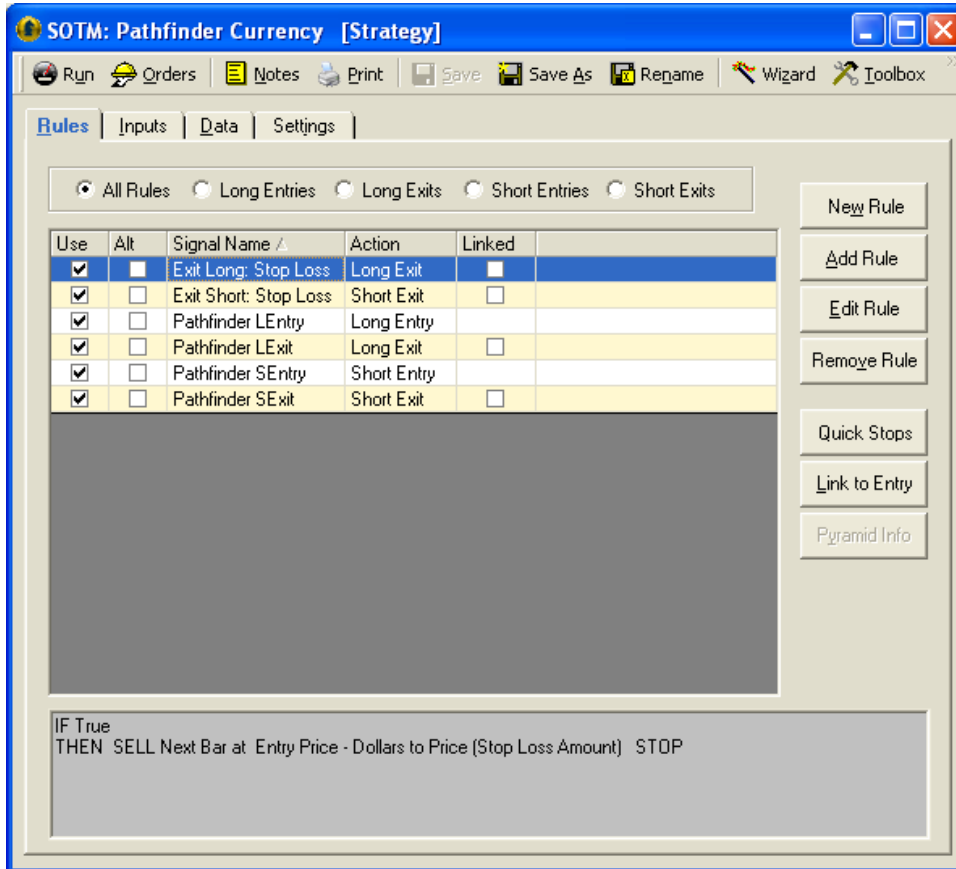
SOTM: My Long Term Trend Rider

This daily S&P strategy will buy based on the position of the current close price in relation to its moving average. It also takes short positions based on the above. The exits that are included are the standards including the dollar stop loss, dollar profit targets, and trailing stops.



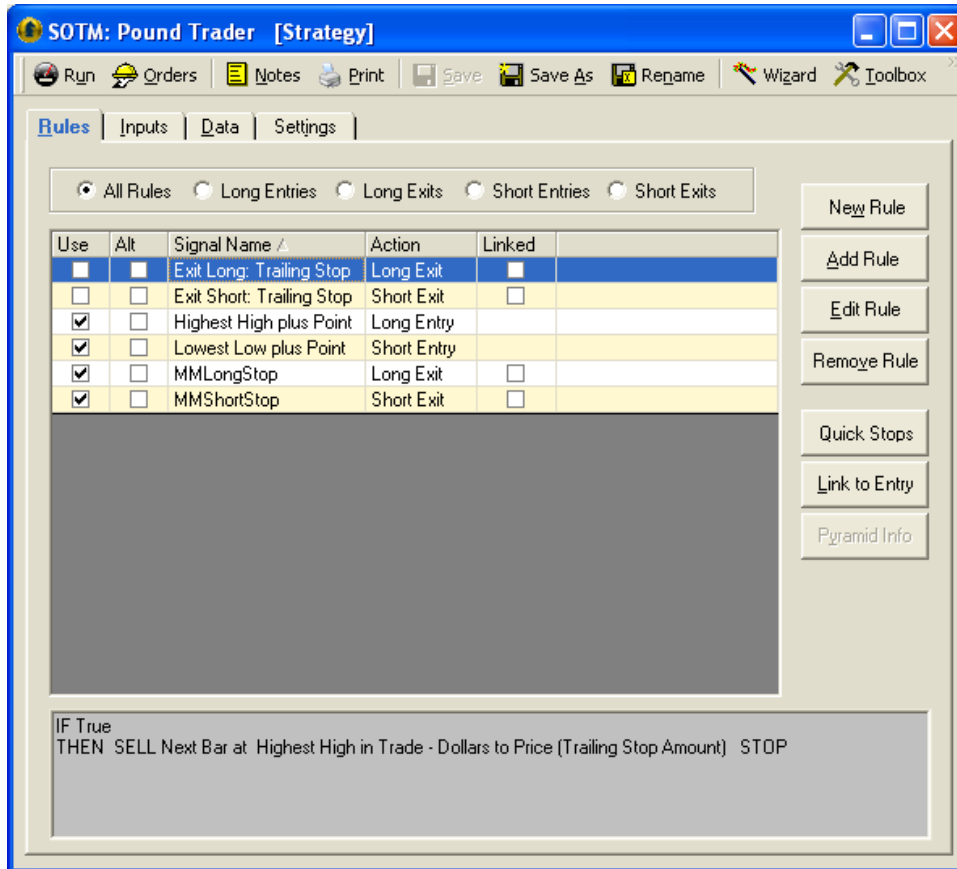
SOTM: Pathfinder Currency

Nelson Freeberg’s strategy utilizes the moving averages of 6, 9, and 18 bars of market 1, but also references T-Bonds. The exits in this strategy include a special Pathfinder Stop Loss rule among others.



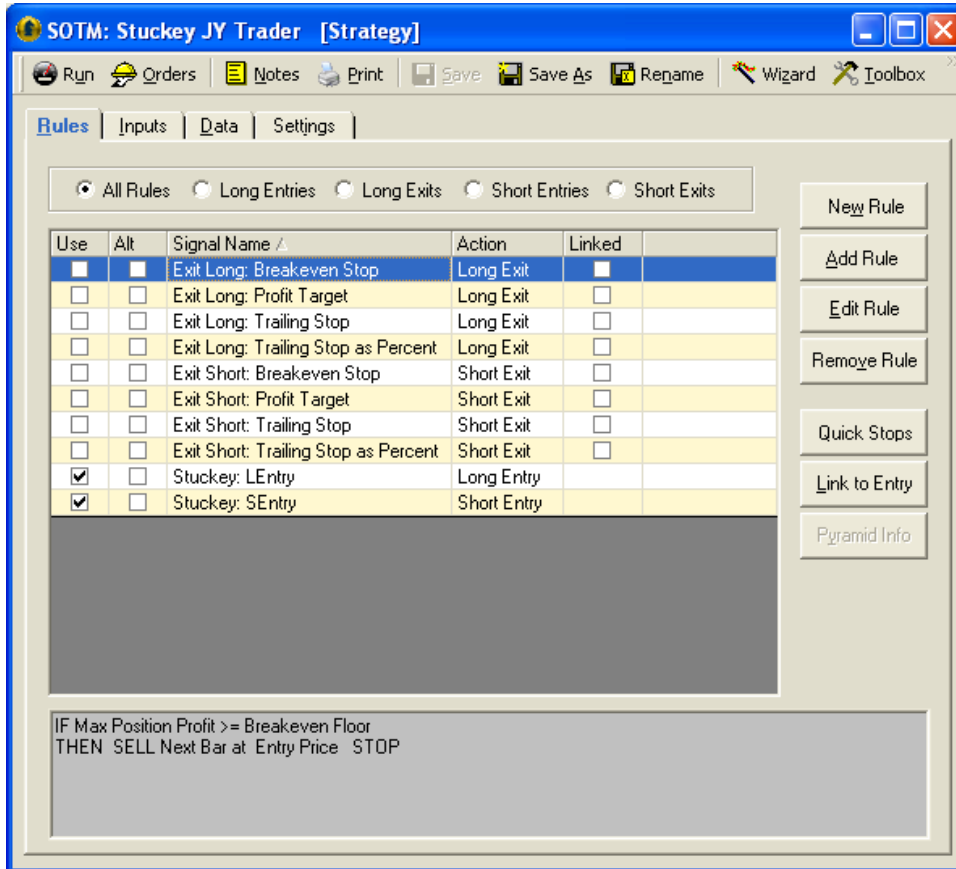
SOTM: Pound Trader

This Cynthia Kase strategy buys at the highest high value of a time period plus a full point move when the smoothed SMA crosses above another smoothed SMA of the closes. It shorts the market when the opposite of the above is true.



SOTM: Stuckey JY Trader

This simple strategy buys when the current close value is greater than the highest high of a certain amount of time. It shorts the market when the close is less than the lowest low of a certain amount of time.



SOTM: Wagner31

This strategy buys at the current close plus a full point move after 4 up closes. It shorts the market at the current close plus a full point move after 4 down closes.

