

WINNING TRADING STRATEGIES LIBRARY**Introduction:**

Winning Trading Strategies is a collection of strategies created by George Pruitt for Futures Truth Magazine. Each of these nine strategies are created out of distinctive concepts in order to demonstrate wide range of techniques. The library has strategies that are based out of several functions including the ADX, Bollinger Bands, Keltner Channel, and many more.

Benefits:

This library provides examples of how Trade Navigator may be used by a variety of traders, each with a different approach to market analysis and trading. Integrating Winning Trading Strategies with Trade Navigator demonstrates the power and flexibility of the software. This library is complete regards to bringing the concepts into focus and making it easy for you to learn how to set up your strategies to your own specifications.

Included in this Library:**Strategies**

- ADX bias Cross
- Average channel
- Bollinger Band Trading
- Buy low Sell high
- King Keltner
- My MOM RSI
- Parabolic with CCI
- Seasonal Soybeans
- Swinger Strategy

Strategy Basket

- The 9 Best Basket Cases

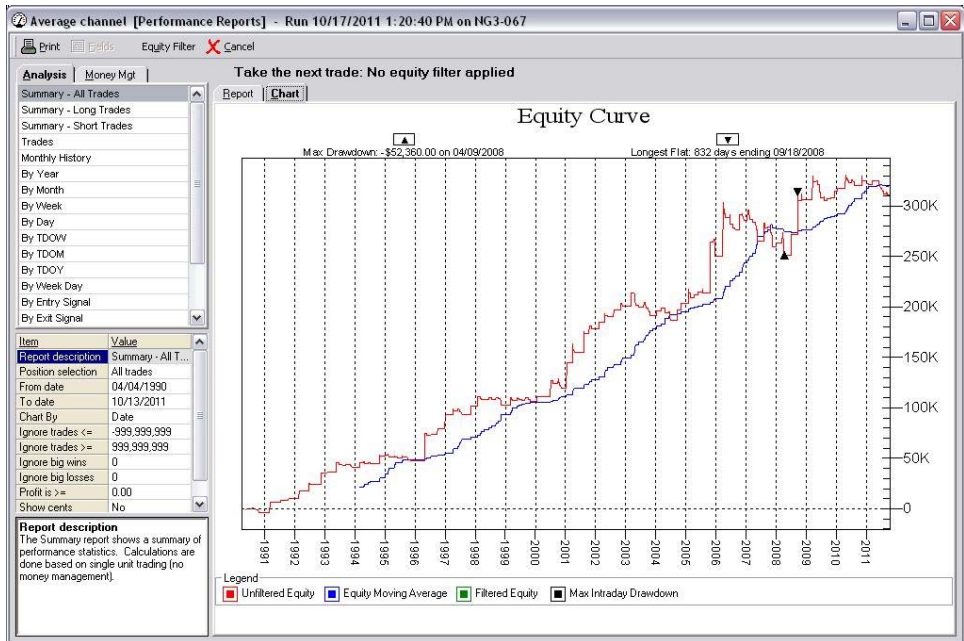
Strategies

ADX Bias Cross



This simple daily strategy consisting of long entries that buy at the next bar high when the ADX is greater than 15 and there is a moving average crossover. The only exits that are included are the special exits with ADX rules.

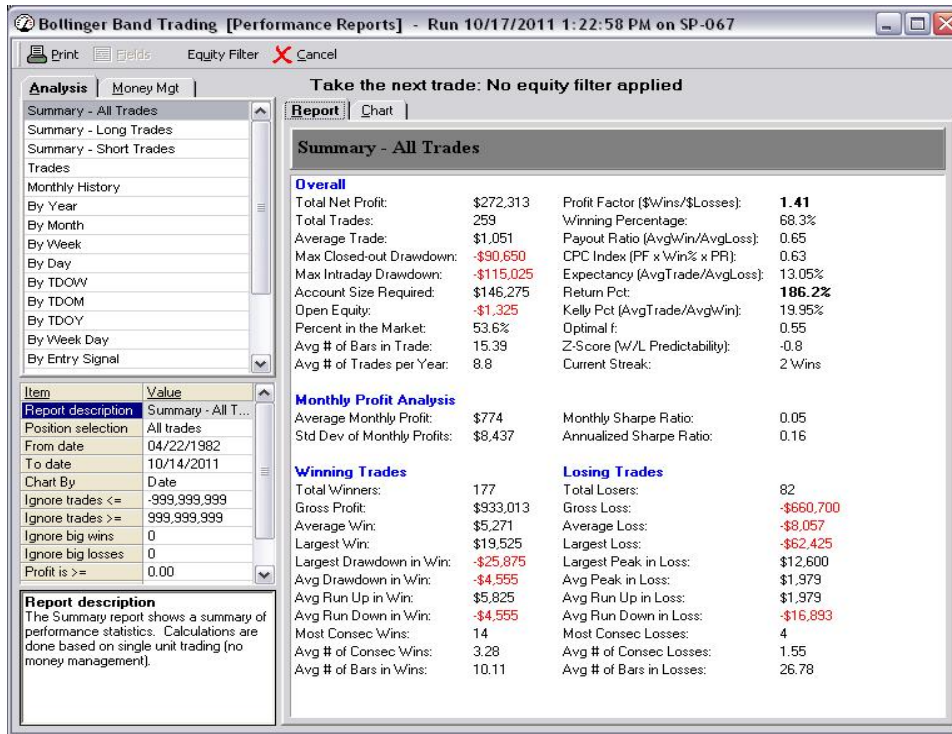
Average channel



The Average Channel Strategy consists of two entry rules and two exit rules. The strategy enters a long position at the highest moving average channel in the past 20 bars of data. It enters a short position at the lowest moving average channel value in the past 20 bars. The two exits are based on the

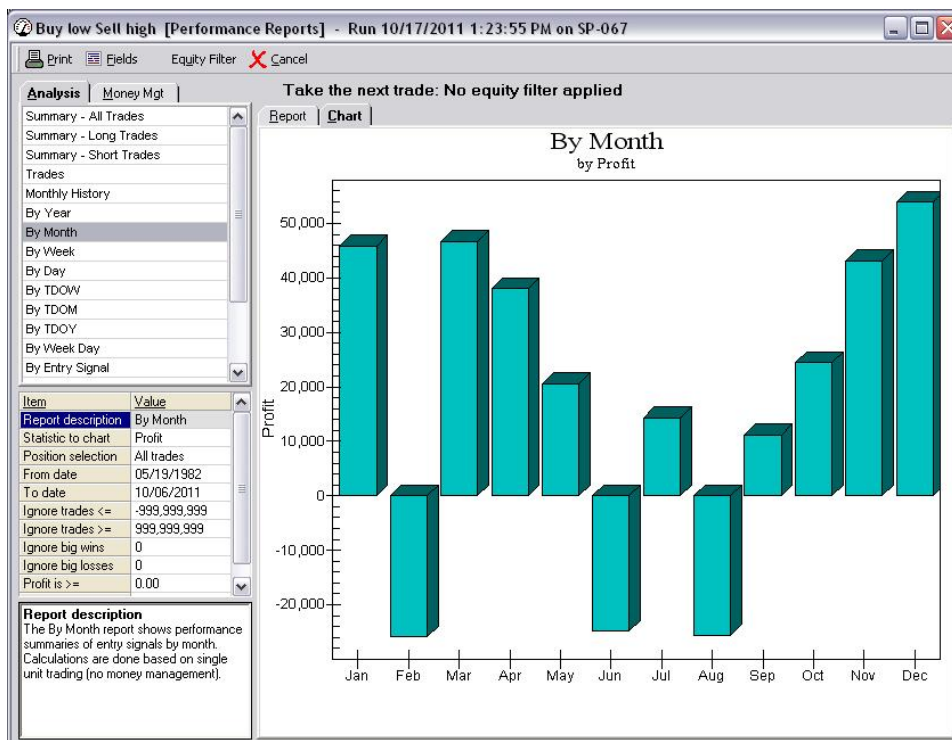
high and low of the past 40 bars.

Bollinger Band Trading



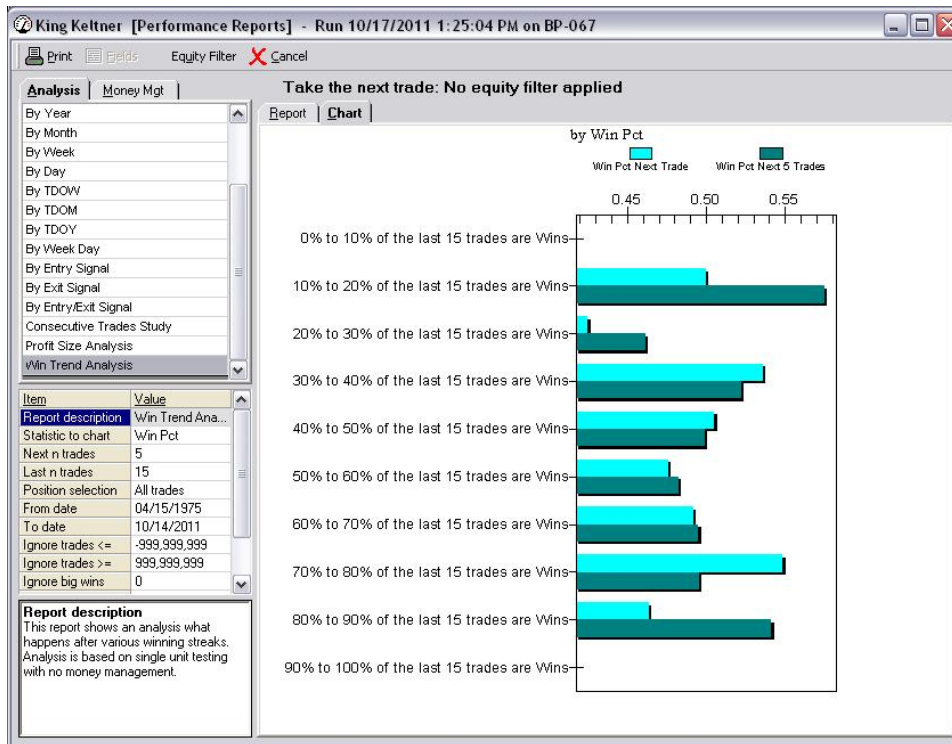
The Bollinger Band Trading Strategy is a great strategy for those who would like to learn more about the Bollinger Bands and how they work. This strategy also has two unique and profitable exits included.

Buy low Sell high



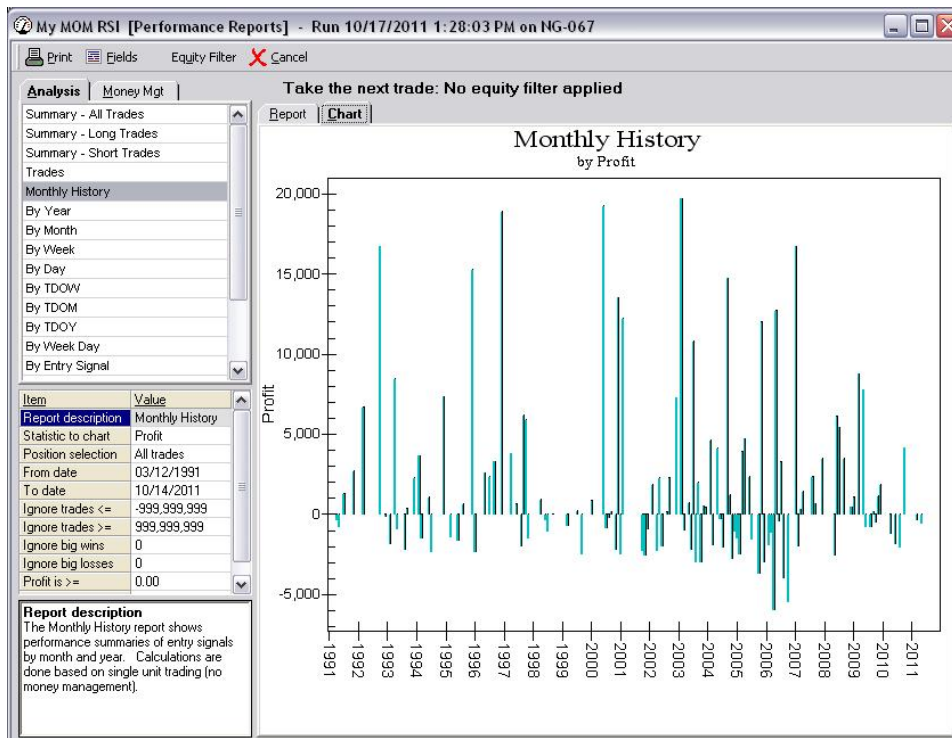
Using the current price in correlation to the Bollinger Band, this strategy buys at new lows and sells at new highs. Excellent contrarian Strategy!!

King Keltner



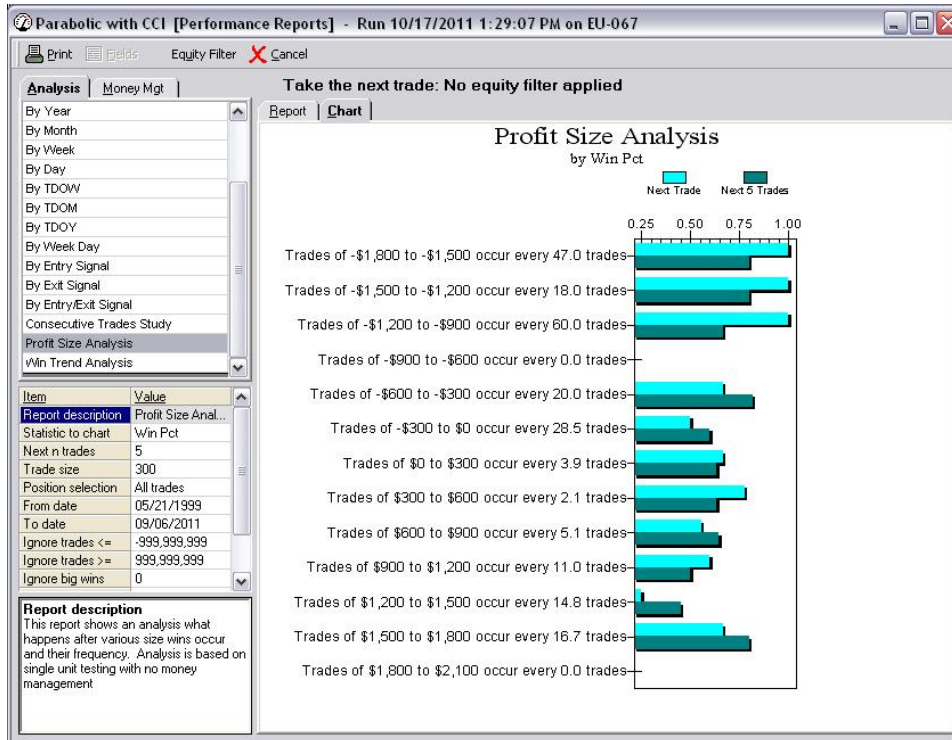
This simple strategy is a great example of how to use the Keltner Bands within your trading strategies. Once the trend is established by using moving average crossovers, this strategy takes a long position at the Keltner Lower band on a stop. For short positions, it simply reverses the long conditions above.

My MOM RSI



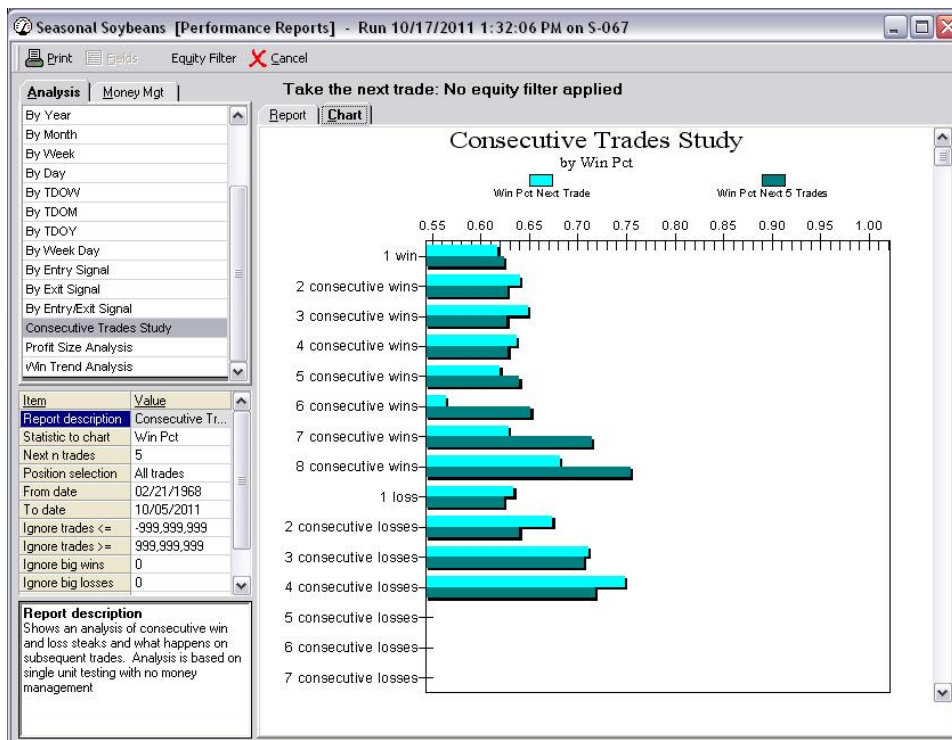
This daily strategy places long and short trades based on the momentum of a particular market. Once it establishes where the momentum is taking the market, it will also confirm it with the RSI oscillator. This strategy uses dollar stop losses and trailing stops.

Parabolic with CCI



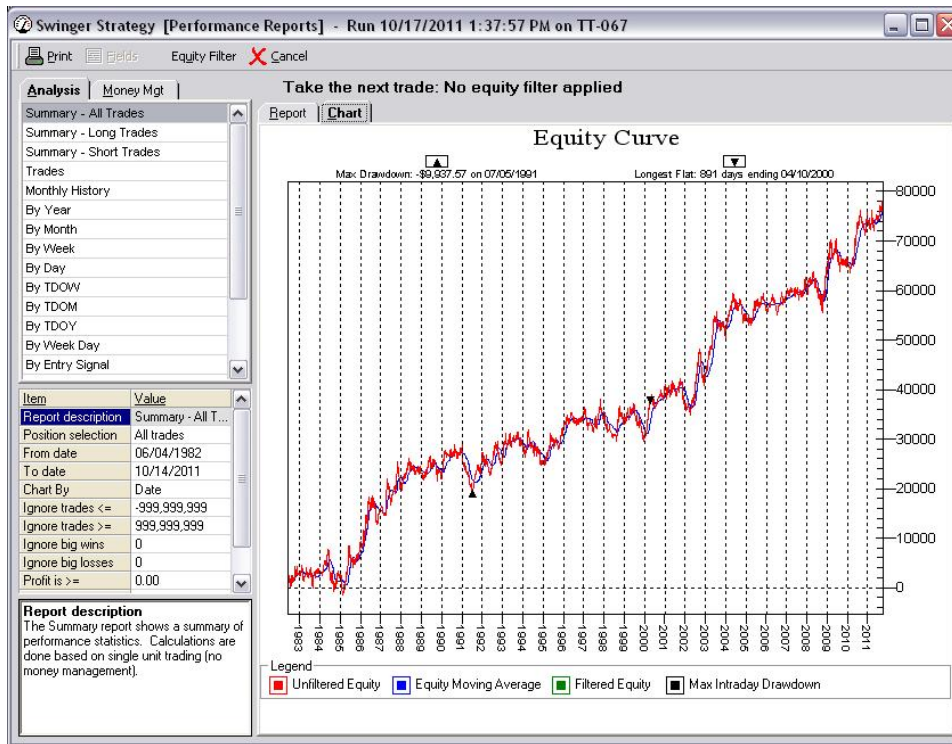
This daily Euro FX strategy is based on the reversal principle that when the price crosses completely above a particular indicator, a long position may be considered. This particular strategy takes that idea one step further by using the corresponding CCI values in order to confirm the direction of the trade.

Seasonal Soybeans



This daily strategy uses seasons to judge when and at what price to long and short the soybean market. Mostly designed for position traders, this strategy works very well for patient traders. It uses the standard dollar profit targets, and trailing stop exits.

Swinger Strategy



This daily strategy is a pretty good example of how a strategy writer can use swing points within their own strategies. Be careful though, a high in the market is not really established until after the fact!! Otherwise we would all be rich.

Strategy Basket

The 9 Best Basket Cases

Strategy	Symbol(s)	Period	From	To	Custom Inputs
ADX bias Cross	HU-067	Daily	12/30/1949	End of Data	
ADX bias Cross	CT9-067	Daily	12/30/1949	End of Data	
Average channel	NG-067	Daily	12/30/1949	End of Data	
Average channel	C-067	Daily	12/30/1949	End of Data	
Average channel	BO-067	Daily	12/30/1949	End of Data	
Average channel	W-067	Daily	12/30/1949	End of Data	
Bollinger Band Trading	SP-067	Daily	12/30/1949	End of Data	
Buy low Sell high	ES-067	Daily	12/30/1949	End of Data	
King Keltner	BP-067	Daily	12/30/1949	End of Data	
King Keltner	CL-067	Daily	12/30/1949	End of Data	
King Keltner	SBS-067	Daily	12/30/1949	End of Data	
My MDM RSI	NG-067	Daily	12/30/1949	End of Data	
My MDM RSI	C-067	Daily	12/30/1949	End of Data	
Parabolic with CCI	EU-067	Daily	12/30/1949	End of Data	
Parabolic with CCI	JY-067	Daily	12/30/1949	End of Data	
Seasonal Soybeans	S-067	Daily	12/30/1949	End of Data	
Swinger Strategy	TT-067	Daily	12/30/1949	End of Data	
Swinger Strategy	FN-067	Daily	12/30/1949	End of Data	
Swinger Strategy	C-067	Daily	12/30/1949	End of Data	

The basket included in this library represents each strategy's "choice" markets. Trade Navigator's strategy basket feature truly is a strategy writer's best friend. You have to take a look at this one.